



Kingston and Richmond
Safeguarding Children Partnership

Kingston and Richmond Safeguarding Children Partnership Yearly Report 2024-25

Foreword from KRSCP's Chair

This report covers the work of the Kingston and Richmond Safeguarding Children Partnership (KRSCP) during the period April 2024 to March 2025.

This year has been another very busy year for the KRSCP working collaboratively with our partners on a wide range of safeguarding activities which are highlighted in this report. We are pleased to see progress against our priorities for 2024-26 which are:

1. Child Sexual Abuse and Exploitation
2. Neglect
3. Adolescent/Transitional Safeguarding and Serious Youth Violence
4. Implementation of Working Together and associated guidance

These priorities have been highlighted through the activities of all our subgroups' broader workstreams.

We have been working throughout the year to implement Working Together to Safeguard Children 2023 Guidance, have met all of the key deadlines, clarified our governance structure and have held engagement events with faith, voluntary, community and sport sectors in Kingston and Richmond.

We are particularly proud of our work with other partnerships and have led in the instigation and production of the Joint South West London Neglect Strategy which has been developed in

collaboration with Merton, Croydon and Wandsworth Safeguarding Children Partnerships.

We have received positive assurance from our Section 11 and Section 175 audits around safeguarding practice across Kingston and Richmond, and the findings of the Joint Targeted Area Inspection on the Multi-Agency Response to Identification of Initial Need and Risk (Front Door) that took place in July 2024.

Learning from local and national reviews has been disseminated and integrated into our multi-agency safeguarding training programme and we have continued our commitment to equalities practice by working with our partners to develop an Equality, Diversity and Inclusion Statement for KRSCP.

We would like to thank all of the multi-agency professionals and leaders across the partnership for their tireless work and dedication to keeping children safe across Kingston and Richmond.

A handwritten signature in black ink, which appears to read 'Fergus Keegan'.

Fergus Keegan, Director of Quality, Kingston and Richmond, South West London Integrated Care Board, and chair of Kingston and Richmond Safeguarding Children Partnership.

Message from KRSCP's Independent Scrutineer

Throughout the period April 2024 to March 2025, I have continued to work alongside KRSCP in the role of Independent Scrutineer. KRSCP have been very open to scrutiny, which has resulted in reflection and a clear commitment to drive improvements, ensuring the effectiveness and quality of the multi-agency arrangements in effectively safeguarding and promoting the welfare of children.

In undertaking scrutiny, a scrutiny framework has been established and agreed by partners. The scrutiny framework reflects the functions as described in Working Together to Safeguard Children 2023 and adopts the [Six Steps for Independent Scrutiny](#) model. The framework aligns with the priorities identified and documented in the KRSCP business plan. The scrutiny plan continues over a two-year period to allow evidence of both progression of areas identified as priorities and impact of the activity.

During the last year of undertaking the role I have regularly attended the meetings of the KRSCP Wider Safeguarding Executive Group and have met with the Lead Safeguarding Partners for the Local Authorities and the Integrated Care Board to discuss governance, areas of priority, safeguarding activity, staffing and funding requirements of the KRSCP.

Additionally, I have had the pleasure of meeting a range of partners, professionals and of hearing the voice of children. This

has allowed the opportunity of triangulating the evidence of the effectiveness of the work undertaken by the partnership.

As part of the scrutiny framework, I have undertaken a range of scrutiny activity to support my assessment of the strength of the partnership safeguarding arrangements.

Areas of scrutiny have included:

- ❖ Scrutiny of work undertaken by the subgroups to progress the identified priorities.
- ❖ Scrutiny of the partnership data and quality assurance processes, providing challenge and advice regarding areas of development.
- ❖ Facilitation of KRSCP practitioner events that focus on areas that align to the partnership priorities, offering the opportunity to evidence good practice and elicit learning.
- ❖ Scrutiny of a multi-agency Deep Dive with a focus on Child Sexual Abuse and Sexual Exploitation agreed in response to local learning.
- ❖ Scrutiny of the Section 11 submissions and the process undertaken to triangulate the data.
- ❖ Supporting the work undertaken to support a joined-up approach across the priorities and work of the various strategic boards.
- ❖ Ongoing scrutiny of the embedding of the developments in response to Working Together to Safeguard Children 2023.

- ❖ Participation in pan-London and national events.

In triangulating the findings from the range of scrutiny activity there is clear evidence of robust partnership arrangements to ensure that children in Kingston and Richmond are safeguarded, and their welfare promoted.

Despite some changes of personnel and the challenges faced by partners who provide services beyond the areas of Kingston and Richmond, the safeguarding arrangements are supported by strong and committed leadership, both at the level of lead and delegated safeguarding partners. Rotating chair responsibilities among partners is effective. Education partners have a strong voice, and all statutory partners are fully committed to the safeguarding ambitions of the partnership. There is a culture of openness, respectful challenge, and a willingness to learn and continually improve.

In the coming year the partnership faces a number of challenges including the need to consider the local response to implementing the children's social care reforms alongside significant changes within partner organisations. The impact of such changes needs ongoing monitoring.

As the Independent Scrutineer, I am committed to hearing directly from children, young people, families, and frontline practitioners to understand what is working well and how multi-agency working can be improved. Given the plans to recruit a young scrutineer have not progressed, I will continue to work with the partnership to

ensure the voice of children, young people and families continues to inform the partnerships work.

While challenges lie ahead, I have confidence in the ability of Kingston and Richmond Safeguarding Children Partnership to build upon its strengths, and I will continue to scrutinise and support the partnership in navigating risks and challenges.

Amanda Boodhoo
Independent Scrutineer



Local Context

Demographics in Kingston:

- ❖ The Royal Borough of Kingston upon Thames has approximately 168,000 residents.
- ❖ In 2020 estimates from ONS, 0–17-year-olds accounted for 22% of the population.

Demographics in Richmond:

- ❖ The London Borough of Richmond upon Thames has approximately 195,000 residents.
- ❖ In 2020 estimates from ONS, 0–17-year-olds accounted for 23% of the population.

What is going well?

- ❖ The partnership's commitment to addressing child neglect has informed all workstreams with positive progress against our planned activity.
- ❖ There has been a good response rate to Section 11 auditing; assurance has been provided as to safeguarding practice by responding agencies.
- ❖ Partnership learning reviews have been commended by the Child Safeguarding Practice Review Panel for their quality.
- ❖ Engagement with sports/community/faith settings has received renewed focus, with a range of events to increase interaction with these partners.

- ❖ Engagement with education partners continues to be championed including through the work of the Education Subgroup, DSL Forums, and other bespoke activity.
- ❖ The partnership continues to promote their Equality, Diversity and Inclusion Statement and work with partners to implement it and learn from each other how to deliver on this.
- ❖ KRSCP has worked collaboratively with a range of other strategic partnerships throughout the year on shared priorities. This has included other Safeguarding Children Partnerships (SCPs) and Safeguarding Adult Boards (SABs) in South West London, as well as participation in London SCP workstreams and initiatives.
- ❖ External scrutiny including Richmond's Joint Targeted Area Inspection, and Kingston's Local Authority Children's Services Ofsted Inspections have identified lots of good practice.



Partners in Kingston Children's Services provided by Achieving for Children (AfC) celebrate their [Ofsted inspection outcome](#), January 2025.

What are we worried about and areas for development?

- ❖ The Metropolitan Police Service (MPS) Operation Encompass, which aims to ensure information sharing with schools regarding children known by police to be affected by domestic abuse, is not functioning consistently. The MPS have addressed this as part of their response to a recommendation in the Joint Targeted Area Inspection (JTAI) of safeguarding practice. Compliance is being monitored through the JTAI action plan.
- ❖ The partnership dataset no longer includes MPS data after changes were made to the data they are able to produce centrally and share routinely across London SCPs. There is a plan to review the partnership dataset including what data products are available from our local MPS basic command unit to ensure we are making best use of available intelligence.
- ❖ Involvement of young people directly into partnership work is an area for development, with the aspiration to recruit a young scrutineer subject to the funding being identified by the delegated safeguarding partners.
- ❖ Online harm to children and young people is a cross-cutting area of concern. This is an area for development for the partnership to consider how safety can be promoted. The Learning and Development Subgroup will be undertaking some focused activity in the year ahead. The partnership's online safeguarding guidance has been refreshed and reissued this year, including a children and young people's version.
- ❖ Police participation at KRSCP multi-agency safeguarding training and learning events has been limited due to conflicting operational demands. The partnership is working collaboratively with other SCPs to consider how MPS participation may be optimised.
- ❖ Work has been ongoing on the Early Help Strategy which is due to be refreshed in 2025. There is work scheduled to implement the strategy as part of the wider government reforms of children's social, which have a strong focus on early support to children and families.
- ❖ Culturally competent safeguarding practice remains an area for development. The partnership will be undertaking ongoing work to promote our EDI statement and its use in practice.
- ❖ Waiting times for Child and Adolescent Mental Health Services (CAMHS) continue to be extensive. An independent review of CAMHS has been completed and its recommendations are due to be implemented by April 2026. This includes moving to a single provider of services with the aim of reducing waiting times. In the meantime, the partnership has received some assurance concerning initiatives to mitigate risk to children whilst they wait to receive services.
- ❖ Engagement with the Lead Safeguarding Partner for MPS has been challenging. The scale of the organisation and the number of SCPs covered by the MPS jurisdiction presents complexity.
- ❖ There are concerns regarding resourcing of the partnership budget and for the contributing statutory safeguarding partners. Both the Local Authorities and the Integrated Care Board are facing growing financial pressures. In the year ahead statutory functions of the partnership will be mapped and prioritised according to capacity.

Progress on Priorities

KRSCP priorities for 2024-26 were agreed at the outset of 2024-25. The planned activity and impact measures are summarised in our [business plan](#). Below is a snapshot of work against these priorities this year, and areas where further action will be taken in the year ahead.

Priority	Partnership activities	Progress
Child Sexual Abuse and Exploitation	Undertake and implement recommendations from the Deep Dive into Child Sexual Abuse (CSA) and Exploitation.	The Deep Dive into Child Sexual Abuse and Exploitation has been completed and its recommendations were accepted by the Safeguarding Executive Group; An action plan will be taken forward in 2025. Impact will be reported in 2025/26.
	The multi-agency partnership training offer will include CSA and Exploitation.	<p>The Centre of Expertise on Child Sexual Abuse have presented at Early Years DSL Forum and Schools DSL Forum. The schools DSL forum has received a presentation on whole school approach to CSA. Examples of impact are featured in this report in feedback from education partners.</p> <p>The KRSCP e-learning offer has included modules on Gangs and Youth Violence, and Domestic Abuse and Intimate Partner Violence.</p>
	KRSCP's Vulnerable Child and Adolescent Subgroup to monitor partnership data and response to contextual safeguarding and ensure effective identification and support to vulnerable children.	A dataset of the full cohort of children who have been discussed at the monthly Pre-MACE (Multi-Agency Child Exploitation) panel and the children who have gone missing from home or care in the previous 12 months is scrutinised at each VCA subgroup meeting. Contextual Safeguarding updates are also presented at the VCA Subgroup. This has improved engagement and awareness around current contextual safeguarding themes across partners.

	Dissemination of learning from local and national child safeguarding practice reviews and rapid reviews relevant to this priority.	<p>Learning from Child Safeguarding Practice Reviews (CSPRs) lunch time briefing sessions were offered by the Partnership Manager to disseminate learning from both local and national CSPRs and rapid reviews to multi-agency practitioners and have included learning on child sexual abuse and exploitation. These sessions have seen a significant increase in attendance when compared to 2023-24 and have been positively evaluated.</p> <p>The findings of I wanted them all to notice, a national report from the Child Safeguarding Practice Review Panel into child sexual abuse in the family environment was presented at the schools DLS forum and Case Review Subgroup. An action plan is being devised for KRSCP for the recommendations to SCPs.</p>
	KRSCP Child Sexual Abuse Pathway to be kept updated with best practice and commissioning arrangements and regularly promoted to partners.	<p>KRSCP CSA pathway has been updated and promoted via the partnership newsletter. A further update is planned for early 2025/26 to directly link practice tools from the Centre of Expertise on Child Sexual Abuse, based on local learning. Use of these tools will be monitored through ongoing audit programme.</p> <p>Our webpages for professionals have been updated with links to resources for practice tools and support services for anyone affected by CSA.</p>
Neglect	Review and refresh neglect strategy and toolkit.	<p>KRSCP have developed a joint South West London Child Neglect Strategy with Merton, Wandsworth and Croydon Safeguarding Children Partnerships.</p> <p>The Neglect Toolkit is currently under review with the aim of developing an updated online version.</p>

	Extend Think Space programme to offer consultations to multi-agency practitioners on neglect.	Think Space programme is planned to be expanded to offer consultations to multi-agency practitioners regarding neglect concerns for 2025-26.
	KRSCP to review and relaunch the Was Not Brought (WNB) Policy.	KRSCP Was Not Brought Policy has been refreshed and relaunched.
Adolescent/ Transitional Safeguarding and Serious Youth Violence	KRSCP to ensure effective linkages to parallel plans and partnerships to promote transitional safeguarding. To include: <ul style="list-style-type: none"> • AfC Youth Justice Plan. • Serious Youth Violence Duty Plans for Kingston and Richmond. • Interface meetings with the respective Safeguarding Adult Boards. 	<p>Some self-assessment work was prepared against the JTAI framework for serious youth violence. This highlighted what's going well and areas for development.</p> <p>The KRSCP e-learning offer has continued to include a module on Gangs and Youth Violence.</p> <p>The Interface meetings with Kingston and Richmond and Wandsworth SABs have focussed on transitional safeguarding.</p> <p>KRSCP have been working with Community Safety Teams in Kingston, and Richmond and Wandsworth, with the aspiration to include transitional safeguarding in Serious Violence Duty Plans going forward.</p>
	Raising awareness of Transitional Safeguarding and promotion of best practice.	Transitional safeguarding work that has been developed by Kingston Community Safety Partnership has been presented at various KRSCP meetings and subgroups.

Implementation of Working Together 2023	Create a fixed term post using the Department for Education (DfE) grant funding to implement the changes required by Working Together 2023 and embed across KRSCP.	A Working Together Implementation Coordinator post was established and recruited in May 2024.
	Create an action plan to ensure alignment with Working Together 2023 Statutory guidance.	<p>An action plan for the implementation of Working Together to Safeguard Children 2023 Guidance was developed and has been progressed.</p> <p>Key deadlines for the implementation have been met including publishing updated local arrangements by the end of 2024.</p>

Voice of the Child

KRSCP is committed to meaningfully hearing and acting on the voices of children and young people. This principle is embedded not just in direct service delivery, but also in our strategic planning, scrutiny, learning events, and resource development. There are a number of ways in which partners have captured the voices of children and young people in order to strengthen safeguarding practice:

Lived Experience and Participation

- ❖ A young person from the Children in Care Council created and presented a video on their experience and definition of neglect at our Neglect Conference, powerfully grounding practitioner learning in their lived experience.
- ❖ Young Person W contributed meaningfully to a Child Safeguarding Practice Review, offering a message featured in the report and helping shape recommendations. They were supported by the independent author to participate in a restorative way that respected their voice and experience.

Resources Created with and for Young People

- ❖ A [Child and Young Person-Friendly Neglect Strategy](#) was produced; it was reviewed by the Children in Care Council to ensure accessibility and relevance.
- ❖ [Staying Safe Online](#): A downloadable resource was created in helping young people navigate digital spaces safely and confidently.

Shaping Policy and Practice

- ❖ Youth Council-led surveys on sexual harassment (with over 900 responses) and racism have been pivotal in shaping the partnership's understanding of young people's lived experiences in schools and the wider community. The findings directly informed the development of KRSCP's training materials, raising awareness and guiding professional responses to these issues. These insights were widely presented at DSL forums, KRSCP subgroups, and with senior leadership groups ensuring that young people's voices influence both practice and strategic decision-making.
- ❖ Children's insights influenced the contextual safeguarding response, including location mapping, peer group analysis, and partnership dashboards (Pre-MACE and Missing Children) to detect and respond to emerging risks.
- ❖ Feedback on return home interviews led to more flexible delivery (in timing and lead professional), supporting greater engagement from children post-missing episodes.
- ❖ KRSCP has endorsed Achieving for Children's 'Writing to the Child' initiative to embed the child's perspective in safeguarding decisions, now extending to referrals from education, and soon health and probation.
- ❖ KRSCP refreshed its [Complaints Procedure for parents and carers in relation to Child Protection Conferences and Risk Outside the Home Reviews](#), directly in response to feedback from families, ensuring an approach that considers families and young people.

Scrutiny and Evaluation Through Children's Eyes

- ❖ Section 11 audits track how services include children's voices in design and review, and moderation ensures partnership learning.
- ❖ KRSCP's Case Review Subgroup and Safeguarding Executive Group consider national learning, such as the Child Safeguarding Practice Review Panel's work on children in specialist residential care, alongside local reviews. As part of this, safeguarding strategy meetings are routinely reviewed to ensure the child's voice is clearly represented, helping to strengthen both direct practice and strategic response.
- ❖ SEND improvement planning, Family Hub design, and complaints procedures have all been co-produced or refreshed based on child and family feedback.
- ❖ KRSCP auditing actively seeks the voice of the child through partner contributions. For example, the Quality and Innovation Subgroup received a presentation on a dip sample of strategy meetings, providing assurance that the child's voice was clearly represented and considered in decision-making.



Quality and Innovation

The Quality and Innovation Subgroup is responsible for a variety of tasks aimed at enhancing our grasp of local performance and identifying ways to improve our collaborative efforts across agencies to work more effectively together to support children.

The chairing of the subgroup was undertaken by Caroline Mark, Associate Director for Quality Assurance and Review, Achieving for Children with Michele Okuda, Designated Nurse Safeguarding Children – Richmond, NHS South West London Integrated Care Board. This group met four times during 2024-25.

Key activities undertaken were as follows:

- ❖ Quarterly scrutiny of the partnership's multi-agency dataset based on key priorities with highlight reporting to the Safeguarding Executive Group. A workshop was held with partners in March 2025 to begin redefining the key performance indicators and ensure the data collected is purposeful.
- ❖ Presentation received from Emotional Health Service focused on initiatives at managing children on a waiting list for CAMHS.
- ❖ Presentation received from Kingston Public Health regarding Sexual Health Needs Assessment for under 20-year-olds.
- ❖ Elective Home Educated (EHE) themes paper received, overview of the key data points from the Department of Education (DfE) focusing on Autumn 2024 compared with Autumn 2023.

- ❖ Report presented by AfC's Head of Conferencing and Review regarding complaint assurance work, from which the recommendations for improvements to the conferencing services were implemented in the updated Complaints Procedure for parents and carers in relation to Child Protection Conferences and promoted via the partnership newsletter.
- ❖ Considered the next partnership Deep Dive into Neglect and which aspects should be explored. Activity begins in April 2025 with a learning event planned for late September.
- ❖ During the course of the year the subgroup heard from two partner agencies on what they are doing to promote equality and tackling inequality within their organisations.
- ❖ Continuation of Think Space, a multi-agency reflective session; three sessions were conducted, addressing a total of four individual children/families.

Additionally, the KRSCP team has collaborated with Kingston Council Commissioning Team with respect to safeguarding elements of providers' bids for new contracts to ensure safeguarding quality is in-built to local services.

Partnership Audit work

Throughout the year, KRSCP has undertaken a range of single and multi-agency audits to gain an insight into safeguarding practice including as part of deep dives, inspections, dip-sampling, and Section 11 self-assessment.

Section 11 Audits

Section 11 Audits were received from Metropolitan Police Service South West Basic Command Unit, Probation Service, AfC Children's Social Care, and British Transport Police.

Further assurance was gained through a moderation session held with the partners noted above and additionally three health provider partners, Kingston Hospital, Hounslow and Richmond Community Healthcare NHS Trust, and South London and Maudsley NHS Trust in September 2024, chaired by our Independent Scrutineer.

Primary Care Section 11 Audit analysis was presented by the Designated Doctor for Safeguarding Children; the audit tool was refreshed to reflect local learning and themes allowing GPs to comply with their Section 11 duties and to identify where to target support to raise safeguarding standards across Kingston and Richmond. 91% of practices completed the audit within the timeframe (41/44).

School audits

The 2024 school safeguarding audit against the requirements under Section 175, highlighted continued strengths across Kingston and Richmond schools. Participation remained strong with 127 out of 144 schools submitting an audit this year via the online audit tool (schools are encouraged to complete a self-assessment using the KRSCP issued tool, but some may complete an alternative form of self-assessment. The data summarised here is for 127 responses received via the KRSCP tool).

Key strengths identified included:

- ❖ All schools responded 'yes' or 'partly' to Designated Safeguarding Leads (DSLs) having sufficient time and support to carry out their roles effectively.
- ❖ All schools responded 'yes' or 'partly', to the timely identification by all staff of children who may benefit from early help and knowledge of how to refer and record these appropriately, a positive sign of the early help offer becoming embedded.
- ❖ 114 schools responded 'yes' or 'partly' to having a nominated teacher for young carers, evidencing the continued impact of awareness-raising work with Sir Ed Davey MP, local carers organisations, and young people. This is an increase from last year's total of 74.
- ❖ All schools confirmed that internet filtering and monitoring systems are in place at some level (109 schools said 'yes' 18 said 'partly'), an improvement on last year when 37 schools were

unsure. This is evidence of the positive impact of the DSL forum held in June 2024 on this topic.

Areas for development identified included:

- ❖ 49 schools responded 'no' and 31 responded 'partly' to having a [Prevent Duty risk assessment](#) which assesses how learners and/or staff may be at risk of being radicalised into terrorism, including online.
- ❖ 32 schools responded 'no' and 55 schools responded 'partly' to having an online safety risk assessment that covers its responsibilities under the Prevent Duty.
- ❖ 9 schools responded 'partly' (5) or 'no' (4) to having an appropriately trained designated teacher for children who are looked after/previously looked after, a statutory requirement for maintained schools and academies. Two schools who responded partly are state maintained/academies, all other responses were from independent or free schools.
- ❖ 10 schools responded no or partly to having an equality statement which covers the school's objectives and the Public Sector Equality Duty.

Early Years Audits

The safeguarding audit for Early Years settings, included Private, Voluntary and Independent (PVI) providers (129 respondents) and Out-of-School (OOS) settings (22 respondents), and Childminders (CM) (140 respondents) across Kingston and Richmond.

Key strengths identified included:

- ❖ PVI: Out of 129 audited settings, 128 confirmed having a DSL, demonstrating strong sector-wide compliance.
- ❖ OOS: Strong Policy Coverage Across Key Areas - all respondents confirmed they have clear policies in place for: emergency evacuation, managing missing and uncollected children, handling concerns and complaints, whistle-blowing procedures for staff, safeguarding children, illness or infection; and administering medication.
- ❖ CM: 100% responded yes to having child protection action procedures showing compliance with safeguarding policy requirements.

Areas for development identified included:

- ❖ PVI: 1 (Richmond) setting reported not having a DSL, which represents a key safeguarding gap.
- ❖ PVI: 4 settings (2 in Kingston, 2 in Richmond) reported not having an Early Education Funding Policy. This presents a compliance and funding risk.
- ❖ PVI: 18 (7 Kingston, 11 Richmond) settings reported 'no' to staff having read and understood the 2024 revised [KRSCP protocol for Bruising in Non-Mobile Babies](#) and know to refer such cases to the SPA.
- ❖ OOS: Although responses were collected from both Richmond (19) and Kingston (3), the data remains heavily Richmond-weighted.

- ❖ OOS: 7 settings stated that their DSL has not completed Level 2 and 3 training with Kingston and Richmond Safeguarding Children Partnership (KRSCP) within the past two years. This highlights a training compliance gap that could affect safeguarding effectiveness.
- ❖ CM: Early Education Funding Policy - 25 settings (13 Kingston, 12 Richmond) reported not having a written Early Education Funding Policy.

The partnership will use the analysis of completed self-assessments across schools and early years settings in our work with education partners to address areas for development, through regular DSL forums, and the Education Subgroup.

Case Review

The Case Review Subgroup (CRS) considers any serious child safeguarding case notifications for Kingston and Richmond and undertakes rapid reviews as required by the statutory guidance in Working Together to Safeguard Children 2023. It also assists the commissioning and assurance of local child safeguarding practice reviews as required. During 2024-25 chairing of the subgroup was undertaken by Louise Doherty, Designated Nurse for Safeguarding Children Kingston, SWL ICB, and Sian Hutchings, Detective Inspector MPS. The CRS met three times during 2024-25 for ordinary subgroup meetings, twice for dedicated case review tracker meetings, and additionally on an ad hoc basis for rapid reviews as required.

In this period, 3 serious child safeguarding cases were notified, and a rapid review was undertaken. For each of these 3 reviews, the partnership determined that a local child safeguarding practice review was not indicated. Feedback received from the Child Safeguarding Practice Review Panel has agreed with the local decision making. These rapid reviews have included a range of learning and action plans are being implemented.

In the case of one rapid review, the partnership additionally held a practitioner event facilitated by our independent scrutineer. This was supportive in offering an opportunity for frontline practitioners to reflect on the strengths and areas of challenge in working with this family and develop a more authoritative action plan.

Here are some examples of areas in which we have identified learning this year:

Engagement with parents
Working with male caregivers
Allegations against adults working with children
Exploring identity and its impact
Risk assessment
Vulnerability of babies and young children

A local [child safeguarding practice review \(CSPR\) concerning Young Person W](#) was completed and published during the year. The review concerned a young person who was abused in foster care, who with support from her professional network and the independent reviewer courageously participated in the review to share their experiences. Key themes from the review included voice of the child, was not brought, functional illness, the impact of COVID-19 on practice, professional challenge, foster carers, and advocacy. A range of work has been undertaken to share and embed the learning across the partnership including briefing sessions for practitioners, and a refresh of the [KRSCP Was Not Brought Guidance](#). An action plan has been developed and will continue to be monitored for completion.

KINGSTON AND RICHMOND LCSPR - CHILD W

The Kingston and Richmond Safeguarding Children Partnership have published a local child safeguarding practice review for Young Person W. The Panel were impressed with the way that this report considered the voice, experiences, and perspective of the child, particularly in terms of the powerful learning it evidenced about the experience of a child who is looked after.

The child was very involved in the review process and contributed a foreword to the report. One of the important lessons emerging from the review was about the overwhelming fear associated with speaking out about abuse and the importance of children receiving clear messages that they have been heard, and that necessary actions have been taken to hold people who abuse children to account.

[Child Safeguarding Practice Review Panel Newsletter December 2024](#)

A Local Child Safeguarding Practice Review concerning Child Y was ongoing during this year, with an independent reviewer working with local partners to consider professional risk assessment and decision-making, and exploration of the impact culture and heritage may have had on work to support Child Y and their family. A final draft report was considered by the subgroup at its meeting in February 2025 and it is anticipated the report will be finalised in early 2025-26.

A briefing from a [local learning review concerning a sibling group experienced chronic neglect](#) was published in June 2024. The learning and recommendations have fed into the work of a neglect task and finish group (see case study on page 18), informed the needs analysis for multi-agency training around trauma informed practice, underscored the importance of Think Space as a multi-agency reflective practice model, promotion of a companion pathway to support local practice regarding escalations, and commissioning of bespoke partnership training regarding Public Law Outline.

Key activities undertaken were as follows:

- ❖ Monitoring of action plans from rapid reviews and child safeguarding practice reviews, including updates from relevant task and finish groups.
- ❖ Contributed to the development of an action plan arising from a Safeguarding Adult Review that had involvement of local children's services to agree actions to improve inclusive multi-agency planning around vulnerable adults.

- ❖ Subgroup members participated in sessions with the Child Safeguarding Practice Review Panel, and London Councils, to share themes and best practice for local reviews.
- ❖ Contributed to the Child Safeguarding Practice Review Panel's thematic work on neglect (publication awaited).
- ❖ Held a reflective session on the delivery of rapid reviews locally and where there are opportunities to ensure these are optimally supportive to participants and their perspectives are brought into the analysis and learning generated.
- ❖ Participated in an expert reference group to inform an update to the Child Safeguarding Practice Review Panel's guidance for partnerships. This will ensure that our local experience of undertaking review work assists this refresh to best practice guidance. It is anticipated this will be available in early 2025-26 and our local guidance will be refreshed thereafter.
- ❖ Contributed anonymised rapid reviews to a London SCP analysis for 2023-24 to support identification of London-wide themes and guide collaborative work and London SCP's training offer.
- ❖ Considered the Child Safeguarding Practice Review Panel's report on child sexual abuse in the family environment and begun benchmarking and drafting an action plan against the recommendations specific to SCPs.
- ❖ Presentation given to a whole service event for Children's Services on serious child safeguarding notification and rapid review processes to promote familiarity and collaboration.
- ❖ The partnership newsletter has included items on the following to promote awareness in connection with learning: updates to KRSCP CSA pathway and Was Not Brought Guidance, [national briefing on elective home education](#), summaries from our case reviews, and training and events linked to local and regional learning.
- ❖ Agreed a monitoring tool for cases discussed by partners as a potentially notifiable serious incident but where it is agreed that the threshold is not met. This will be kept updated and will support scrutiny of local decision making and application of threshold. Actions identified as required to ensure learning relating to these incidents is taken forward by partners and the partnership team; this year this has included working with a local host family agency and a nannying agency to consider how their safeguarding practice may be strengthened.

Neglect Case Study: Making a Difference for Families and Practitioners

Why this work matters

In response to themes of neglect identified in recent Child Safeguarding Practice Reviews and Rapid reviews, a multi-agency Task & Finish group was formed. From September to December 2024, we coordinated a range of targeted activities designed to improve early identification, response, and support for children experiencing neglect.

What we did

The Learning & Development Subgroup planned and delivered focused activity on neglect from September to December 2024. This included training on:

- Neglect and Early Years.
- Educational Neglect.
- Affluent Neglect.
- Medical Neglect.
- Hoarding and Neglect.
- KRSCP & WSCP Neglect Conference.

Also focused on neglect at our DSL forums and subgroups.

What we did

Developed and revised key resources:

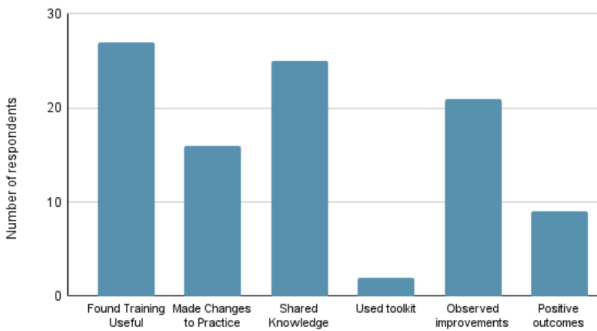
- Joint SW Neglect Strategy (with Wandsworth, Merton & Croydon SCPs).
- Young Person-friendly version of the Strategy.
- Developed Educational Neglect Guidance.
- Neglect Toolkit review via online survey and practitioner focus groups.

Planned for 2025

- Deep dive into Neglect during the Summer of 2025.
- Embed the Joint Neglect Strategy and revised Toolkit across the partnership.
- Digitise the Neglect Toolkit and support partners with implementation
- Continue measuring impact, not just activity.

Impact and Analysis at a glance

Neglect Training Impact Survey Results



4 in 5 practitioners either:

- Shared learning with colleagues
- Made real changes in how they work
- Or implemented tools in live safeguarding situations

These are signs of culture shift, not just knowledge gained, highlighting the deep reach of this training into everyday safeguarding practice.



Practitioners have brought any concerns around neglect sooner as they have an increased awareness and as a Safeguarding Team we are able to support in referrals being made earlier than previously.

Beyond the Numbers: What Practitioners Told Us

"The training made me more confident in having difficult conversations with families."

"We've started using the language from the toolkit in staff meetings."

"I referred a case after understanding affluent neglect better which I may have questioned previously"

"After recognising the signs of hoarding in a home, I was able to approach the situation with more sensitivity and awareness...led to a productive conversation with the parents, where we discussed the impact of the home environment on the children's safety and well-being. As a result, the family received targeted support, including resources for managing the clutter and access to services that could address underlying issues like hoarding...not only improved the home environment but also helped reduce the stress within the family, creating a safer and more stable space for the children."

Learning and Development

The multi-agency training offer from KRSCP is overseen by the Learning and Development Subgroup. This subgroup is chaired by Clare Meadows, Head of Learning and Development at AfC and supported by Daksha Mistry who leads on learning and development in the partnership team. The group met 3 times during 2024-25. A meeting scheduled for July was cancelled due to the Joint Targeted Area Inspection (JTAI).

Key activities undertaken regarding local workforce development were as follows:

- ❖ 93 safeguarding training and learning sessions were delivered which were attended by a total of 2,258 multi-agency delegates. KRSCP also continued to offer the e-learning safeguarding modules which were completed by a total of 2,815 multi-agency learners. This data is an increase when compared to 2023-24 both in terms of numbers of courses offered, and numbers of attendees.
- ❖ The majority of multi-agency training places are taken by education and early years staff, followed by AfC social care and then health, and then voluntary, community and sport sectors. Police attendance at multi-agency safeguarding training continues to be a concern and was highlighted in the Richmond JTAI report. Attendance by the Early Years sector has increased if we compare to last year and this is likely due to the focus we have been having on Early Years settings attending KRSCP safeguarding training since the summer.
- ❖ To reflect our business priority on neglect, the Learning and Development subgroup planned a focussed term of learning activity on this topic from September to December 2025. This included a variety of learning events and a joint conference with Wandsworth Safeguarding Children Partnership. All of the events reflected the newly developed joint South West Child Neglect Strategy with the aim of embedding it across the partnerships.
- ❖ A Learning Needs Analysis for KRSCP was undertaken in summer 2024. This identified a list of top 10 topics which will be the focus of training commissioning for the 2025-2026 KRSCP multi-agency safeguarding training programme.
- ❖ The Learning and Development subgroup have discussed what should be the theme for the focussed learning and development activity for 2025-26 and it was agreed that it should be on online harms.
- ❖ The KRSCP multi-agency training expectations document has been reviewed by the subgroup and is being updated.
- ❖ The animated videos which have been developed by AfC have been shared at the subgroup meetings and agreed to share across the partnership and develop more joint videos of this type in response to learning needs identified.
- ❖ There has been a focus on engaging the early years sector in attending KRSCP safeguarding training and to support this, the subgroup agreed the contents for a video for the induction of Early Years staff to be developed jointly by AfC and KRSCP.

- ❖ The subgroup has also undertaken assurance and scrutiny of the single agency safeguarding training provided by partner agencies, and AfC and MPS have presented their in-house safeguarding training offers subgroup meetings.
- ❖ The partnership continues its close working relationship with AfC Workforce Development. This has included the continued administration of the partnership multi-agency safeguarding training programme including the e-learning offer by AfC's Workforce and Development Team. This approach has continued to result in better collaboration, a more effective use of resources and less duplication. The role of Clare Meadows, Head of Learning and Development AfC, as the chair of the Learning and Development Subgroup has supported this effective joint working and led to the development of positive working relationships across the partnership.

A breakdown of attendees of partnership training by agency/sector is as follows:

Agency	Attendees
Early Years	626
Education	736
Health	205
Achieving for Children (LA children's services)	534
Local Authority Services	24
Private, Voluntary and Community	115
Sports and Culture	15
Justice and Crime - Police and Probation	3

Below are some examples from evaluations of KRSCP training that demonstrate positive impact on practice:

'The course was invaluable in terms of the scenarios which looked at a range of situations where maltreatment of children can occur and how these should flag up concerns. The role 'professional curiosity' can be vital in identifying cases early on. The Level 3 training will also help me to update staff members in a range of ways that will help my organisation to keep children safe.'

KRSCP Safeguarding Children: Child Protection Process Level 3

'It was delivered expertly by the speaker with lots of room for audience participation and discussion. It was a very educating and thought-provoking session which got to the heart of the matter and when the slides come through, I will be using them in staff training.'

KRSCP Educational Neglect

'The course was informative and helped me better understand harmful sexual behaviour, improving my ability to interpret in sensitive situations. I appreciated the clear explanations and case studies. More interactive elements could enhance the learning experience, but overall, it was very valuable.'

KRSCP Harmful Sexual Behaviours: An Introduction

Vulnerable Children and Adolescents

The Vulnerable Children and Adolescent (VCA) Subgroup aims to ensure an effective and timely response from all agencies involved in managing children and young people missing from home, care, or education and those at risk of criminal and/or sexual exploitation, radicalisation, and extremism, harmful sexual behaviour, trafficking, serious youth violence, gangs and groups, and substance misuse. The subgroup also ensures that criminal exploitation issues and children missing from home, care and education are interlinked at a strategic level to ensure they are addressed independently but with reference to one another.

The subgroup is co-chaired by Alison Twynam, Director of Children's Social Care, AfC, and Laura Semple, Detective Chief Inspector, South West Basic Command Unit, MPS. The subgroup met four times during 2024-25.

Key activities undertaken were as follows:

- ❖ Pre-MACE/MACE themes and the VCA dataset have been presented at each subgroup meeting, there have been discussions based on missing case studies and updates regarding contextual safeguarding to understand local trends and themes.
- ❖ Prevent updates have been given by the Prevent leads from Kingston, and Richmond and Wandsworth Councils to share both national and local issues with regards to radicalisation.
- ❖ The Kingston Community Safety Team have given an overview of the work they have been doing on transitional safeguarding supported by Dez Holmes and presented on the Clear, Hold Build joint initiative on the Cambridge Road Estate in Kingston which aims to Clear the area of criminal activity; Hold off other criminals from moving in on the gaps; and Build a sense of community and resilience.
- ❖ The subgroup have explored themes of adultification, risk taking behaviour, exploitation, disproportionality, and racism, with presentation on [Vamp Child M 7 minute learning](#) from Merton's Safeguarding Children Partnership and [The Life Of A Top Boy](#) and explored how to take these issues forward in Kingston and Richmond.
- ❖ The learning from the Richmond Knife Crime Audit has been shared with the subgroup.
- ❖ The voice of the child has been represented by a presentation of the [everyone has a role to play in preventing child exploitation](#) Youth Voice Report by The Children's Society
- ❖ The VCA Action Plan has been reviewed and updated.

Engagement with Early Years and Education settings

KRSCP's Education Coordinator organises termly forums for the DSLs in the maintained schools, the independent schools and early years settings (open to private nurseries and childminders). There are forums each term for each sector and attendance has been very

strong. Each forum includes learning inspired from findings of our audit work or from local or national emerging issues. These are also covered in termly newsletters to each sector, circulated via relevant network communications and available on [KRSCP's website](#).

Schools Designated Safeguarding Lead Forums

Three school designated safeguarding lead (DSL) forums were held during 2024-25 with a total of 322 DSLs attending. The forums have focussed on the following topics:

- ❖ SPA updates
- ❖ Filtering and Monitoring
- ❖ Early Help Redesign
- ❖ Prevent Duty
- ❖ Suicide prevention and support regarding self-harm
- ❖ Whole School Approach to Child Sexual Abuse

Feedback from the DSL forums has been really positive; here are some examples of how the content has impacted practice:

I found the presentation to be both informative and empowering. The session and the insight provided has given me the confidence to gently explore as I would any other concerns of abuse.

I have already used and referenced the 'Key indicators and signs of CSA toolkit' and know that it will be regularly referred to going forwards. The presentation has fundamentally changed the way that I view and approach potential CSA victims. Thank you.

Filtering and Monitoring was SO useful; it really motivated me to draw on the multiple additional resources available through the links on this topic and I definitely have deepened my involvement and understanding of Filtering particularly as a result of this springboard, coupled with the substantive improvements in the London Grid for Learning Dashboard. This led to an INSET for teaching staff, followed by an assembly led by our Executive Head earlier this term.

Early Years DSL Forums

There have been 3 Early Years DSL Forums during 2024-25 which have covered the following topics:

- ❖ Raising Awareness about Child Sexual Abuse
- ❖ Prevent Duty for Early Years
- ❖ MARAC and Domestic Abuse
- ❖ Early Years and Neglect
- ❖ Whistleblowing and Safe Cultures in Early Years settings

The forums are held virtually from 7-9pm to enable childminders and staff from early years settings to attend outside of normal working hours. Attendance has continued to be good with a total of 209 DSLs from early years settings and childminders attending across 2024-25.

This year in response to local learning we have initiated 'New to DSL safeguarding training' for early years DSLs provided collaboratively by members of the early years advisory team, Single Point of Access, Local Authority Designated Officer service, Referral and Assessment Team, and KRSCP. Uptake has been good, and this training is being provided twice a year.

Education Subgroup

The Education Subgroup is a collaborative, multi-agency approach to championing the education of all our children, in response to the

increased awareness of the need to include education as the fourth partner in safeguarding children partnerships. It is chaired by Suzanne Parrott and during 2024-25 the subgroup has met 3 times. The subgroup meetings have explored the following topics:

- ❖ Local learning highlighted the decrease in KRSCP multi-agency safeguarding training uptake by the early years sector; the subgroup discussed this and considered their role in addressing safeguarding in early years settings.
- ❖ The learning from the Young Person W Child Safeguarding Practice Review was presented at the subgroup meeting and how functional illness can present in children was explored.
- ❖ The complexities of Education Health and Care Plans (EHCPs) when the child is living out of borough was considered and the importance of health input into all EHCPs was highlighted.
- ❖ The subgroup meeting has also received a presentation on Kinship Care.
- ❖ AfC has updated on the numbers of children who are being Electively Home Educated across Kingston and Richmond and out of those how many have Child in Need or Child Protection Plans.

Subgroup Chairs Meetings

This group has met twice during 2024-25 (A meeting scheduled for July was cancelled due to JTAI). The aim of these meetings is to provide an opportunity for the chairs of the respective subgroups to align their activities, consider common themes, and ensure

activity is responsive to the KRSCP business priorities. The meetings have discussed the JTAI action plan, learning from rapid reviews and child safeguarding practice reviews, and the implementation of Working Together to Safeguard Children 2023. Formal terms of reference for this meeting have been established during this period.

Equality, Diversity, and Inclusion

Through ongoing multi-agency learning including audits, dip samples, and child safeguarding practice reviews, it became clear that there is a lack of confidence and consistency in how equality, diversity, and inclusion (EDI) is understood and applied across the partnership. In response, the partnership co-produced the [KRSCP Equality, Diversity and Inclusion Statement](#) to define our collective commitment and expectations. This was followed by a two-part training series:

Part One was an online event aimed at building understanding of the EDI vision and boosting professional confidence in applying it.

Part Two was an in-person, workshop-led event designed to deepen learning through interactive, practical sessions on applying EDI in day-to-day safeguarding work - see details of workshops offered as follows:

Difficult Conversations with Services Users (Siobhan Gleeson, Bisma Mubarak, and Amy Wells, South West London St George’s Mental Health NHS Trust)
Difficult Conversations in the Workplace (Nicole Williams and Serena Jones-Patel, SWLStG)
Use of Language and Constructive Challenge (Daksha Mistry, KRSCP)
Barriers to embedding the EDI statement within your team/workplace (Andrea Roberts, Your Healthcare CIC)
Understanding Privilege and Power (Georgina Andrews, AfC)
Adultification (By Roberta Evans from AfC)



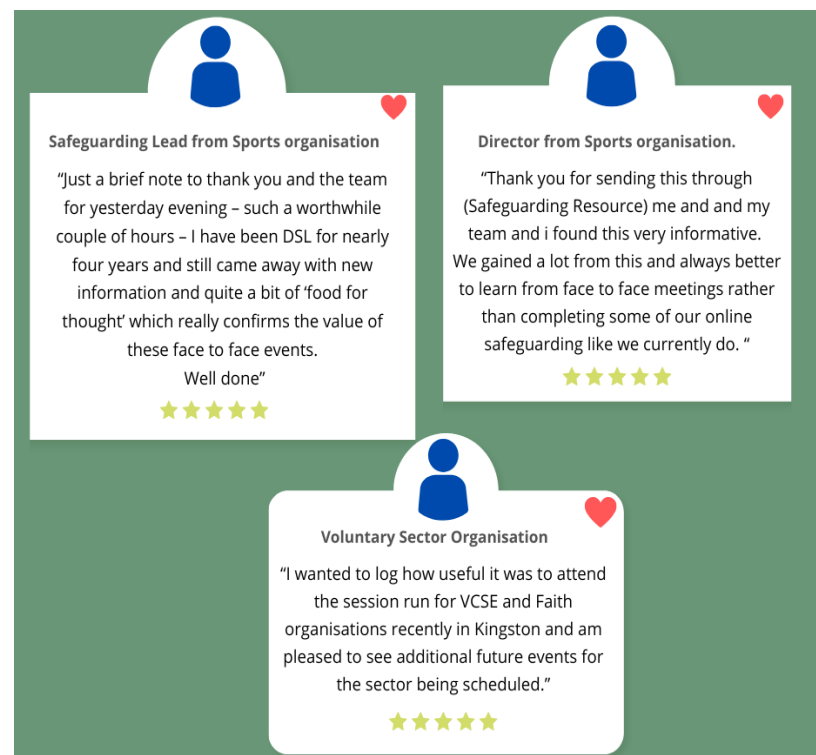
Roberta Evans, Associate Director for Family and Adolescents, AfC, leads a workshop on adultification.

Feedback from participants demonstrated a clear appetite for repeating and expanding the workshops, allowing more staff to benefit and explore additional EDI topics in depth.

Strengthening VCSE, Faith and Sports Engagement

Through proactive engagement, structured learning, and ongoing partnership-building, KRSCP has successfully met the Working Together 2023 requirement, ensuring that VCSE, faith, and sports organisations are meaningfully engaged in local safeguarding arrangements. By identifying key organisations, hosting dedicated events, developing tailored resources, and establishing ongoing collaboration, we have created a sustainable framework for their involvement.

The overwhelmingly positive feedback and continued sector engagement demonstrate that these organisations are not only included but actively contributing to safeguarding improvements, strengthening multi-agency efforts to protect children in Kingston and Richmond.



Early Help

KRSCP has supported AfC with a comprehensive review of the Early Help Strategy. This work aims to ensure alignment with Working Together 2023, Family Hubs development, and evolving local needs.

This strategy is rooted in a vision to ensure that families receive the right support at the right time, preventing needs from escalating.

Collaborative workshops were convened to develop a more inclusive and accessible early help offer, with families benefiting from future improvements that are informed by cross-sector insights.

Three multi-agency workshops, including strong input from the voluntary, community and social enterprise (VCSE) sector provided a platform for professionals to share experiences, challenges, and priorities, ensuring the strategy reflects frontline realities. These sessions helped begin to co-create the strategic direction, promoting ownership and clarity across the partnership around thresholds and principles of early help.

Practitioners are being engaged early, giving them time to adapt to and inform future developments, fostering a smoother transition when the revised strategy is launched.

While the updated strategy and threshold document are still in development, the groundwork laid through collaborative workshops and strategic alignment with updates on Family Hubs demonstrates a proactive, joined-up approach.

Work with other partnerships

Throughout 2024-25 KRSCP has collaborated well with other partnerships. This has included:

- ❖ Leading on and the development of the joint South West London Child Neglect Strategy with Croydon, Merton and Wandsworth's Safeguarding Children Partnerships.
- ❖ Engaging with Kingston Safeguarding Adults Board (SAB), and Richmond and Wandsworth SAB via the Interface Meetings which aimed to identify cross cutting themes across children's and adults' services.
- ❖ Continued our positive relationship with the London Safeguarding Children Partnership with Daksha Mistry continuing as the Chair of the London SCP's Training Subgroup and supporting the development of the Pan-London Multi-Agency Safeguarding Training Programme and contributing to the London Rapid Review Analysis Report (2023-24).

Implementation of Working Together to Safeguard Children 2023- A Snapshot



Engagement with VCSE, Faith and Sports Sectors

Two tailored engagement events were held: One for VCSE & Faith Organisations and one for Sports Organisations.

- Both events included presentations from SPA, LADO and key safeguarding experts, addressing common misconceptions and providing a structure and best practice referral guide.
- In response to overwhelmingly positive feedback, two additional events have been scheduled:
- An online Q&A session for VCSE, Sports and Faiths Sectors to address ongoing safeguarding queries.
- Another in-person event with the VCSE and Faith Sector at Twickenham to provide further safeguarding updates and networking opportunities.



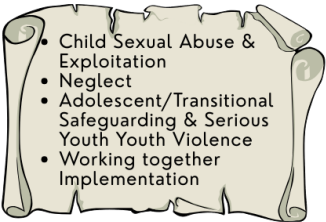
On how likely attendees are to apply the knowledge or skills gained from the event in their practice

"...The whole event was exactly what was needed, and I think will kickstart lots more positive interaction with the VCS..."



Governance

- Health check exercise undertaken with executive group in June 2024 to plan for WT 2023 implementation.
- In accordance with (WT23c2) the partnership published arrangements were updated to reflect how we link with the Lead Safeguarding Partners (LSPs), to clarify who the Delegated Safeguarding Partners (DSPs) are what the multiagency arrangements entail.
- Engagement meetings have been held with Kingston and Richmond local authority LSPs and the LSP for the ICB with a forward plan to have 6 monthly LSP engagement meetings from September 2025. The engagement meeting with the LSP for the police is outstanding due to changes in personnel.
- Business plan has been updated to include KRSCP priorities for 2024-2026 which are:



- A review was carried out to assess how Prison and Probation Services align with Working Together 2023 (WT23c4). The findings provided reasonable assurance that safeguarding responsibilities are understood and being implemented, particularly in relation to children affected by parental imprisonment. The process strengthened multi-agency coordination, clarified roles for practitioners, and identified areas for improvement, laying the groundwork for ongoing development and future impact reviews.



- All subgroups' terms of reference document have been updated to reflect Working Together to Safeguard Children guidance.
- Ongoing Operational Safeguarding Executive Group meetings and Wider Safeguarding Executive Groups Meetings have been held throughout the year and are generally well attended. A challenge meeting was held with the Police to highlight attendance.

Voice of the Child/Young Person



A powerful video created by a young person from the Children in Care Council, sharing their lived experience and definition of neglect.

Used at our Neglect Conference to amplify youth voice.

Online Safety Resource

[Staying Safe Online](#)

Created to help young people navigate digital spaces safely- It is clear, accessible, and downloadable.



Child and Young Person Friendly Neglect Strategy

Reviewed by the Children in Care Council
"It helps you understand what neglect means and what you can do if it happens to you or someone you know."

Young Person W contributed powerfully to a Child Safeguarding Practice Review

Their message was included in the at the beginning of the Child Safeguarding Practice Review Report.

SO WHAT'S NEXT?

We aim to have more involvement of children and young people throughout our activities and scrutiny work.
The vision is in motion!

Joint Targeted Area Inspection

In July 2024 Richmond received a joint targeted area inspection (JTAI) on the multi-agency response to identification of initial need and risk. JTAIs are simultaneous inspections by the statutory safeguarding partners' respective inspectorates around a theme.

The partnership had been [preparing for a JTAI](#) across the available frameworks and had devised a detailed inspection plan and audit tools, and undertaken awareness-raising work with partners, and self-assessment and dry-run data generation activity in readiness. This was coordinated through multi-agency preparation meetings chaired by the Director of Children's Social Care and supported by the partnership team.

The [inspection report](#) was positive with a range of strengths in practice identified noting:

'Partner agencies work well together at an operational level, and the majority of children receive a timely and appropriate response through the 'front door' single point of access (SPA). There are a variety of multi-agency safeguarding meetings that are well attended by a range of partner agencies, with relevant information sharing and effective multi-agency planning. Thresholds are generally well understood, such that most children receive the right support at the right time, in response to their identified needs and risks.'

There were also areas of learning and need for improvement identified for the Police, Kingston Hospital, and children's social

care. These have been developed into an action plan which is monitored quarterly at the Wider Safeguarding Executive Group meetings.

The following was the feedback specific to partnership's strategic work:

'As a partnership, KRSCP knows its strengths and areas for improvement well. Leaders use a wide range of measures to monitor practice and evaluate its impact for children and families. The KRSCP subgroups are effective in their planning and their scrutiny of performance data. A recently established education subgroup is successfully promoting the function of education providers as an influential and equal partner. The independent scrutineer acts as a critical friend to the partnership, using a variety of information, including performance data and observations of practice. The partnership is responsive to this challenge and their recommendations for improvement. The partnership recognises there is more work to be done to develop the independent scrutineer role further to include the voice of children and young people in Richmond upon Thames.'

Child Death Reviews

Responsibility for reviewing the deaths of children under 18 years of age is not a function of the safeguarding children partnership, but since 2019 has been the specific responsibility of two of the statutory partners, the local authority and the integrated care board according to the statutory guidance for child death reviews. From this time, Kingston and Richmond have shared a joint South West London Child Death Overview Panel (SWL CDOP) with Croydon, Merton, Sutton and Wandsworth which is centrally managed by NHS South West London Integrated Care Board. SWL CDOP has an independent chair, Kelly Williams, appointed in October 2021. An interim chair, Tara Kerr-Elliott has been covering a period of planned absence.

Support for deaths of children resident and/or occurring in Kingston and Richmond continues to be resourced locally through the partnership coordinator who acts as the single point of contact (0.5 FTE), and there is a joint designated paediatrician for child deaths across Kingston and Richmond, Dr Rowan Heath. There is also significant support to the process from other local designates and wider multi-agency professionals.

In 2024-25, 2 child deaths were notified in Kingston, and 8 child deaths were notified in Richmond. Of the 10 deaths across Kingston and Richmond, 4 required a joint agency response (JAR).

Child death review meetings (CDRMs), relating to deaths occurring both within and before this reporting period, were convened by the partnership coordinator for 7 deaths of Kingston resident children,

3 deaths of Richmond resident children. The partnership coordinator and other local professionals contributed to a further 5 CDRMs convened by other areas in respect of 2 Kingston resident children, and 3 Richmond resident children.

During 2024-25, 13 child deaths in Kingston and 5 child deaths in Richmond had final reviews at SWL CDOP (these deaths include some notified in previous reporting periods). Across South West London CDOP a total of 54 child death reviews were completed. Of all the deaths reviewed, 54% were identified as having modifiable factors, those through which by means of local or national intervention, the risk of future deaths might be reduced.

The SWL CDOP Annual Report for 2024-25 will be finalised in summer 2025 and presented to the ICB and respective local authorities to share the summary learning in detail.

The partnership coordinator and other child death review colleagues attended events provided by the National Child Mortality Database throughout the year, to support best practice.

KRSCP has been involved in a range of activities to share the learning from child deaths locally and nationally, including:

- ❖ Awareness-raising of child safety promotion through partnership social media including items on child safety week, immunisation promotion, choking hazards, nappy sacks, drowning, suicide prevention, and bereavement support services.
- ❖ Awareness-raising of learning from child deaths and child safety initiatives through the partnership newsletter including items

on substance use, online-safety, falling from height, water-safety, self-harm and suicide prevention, safer sleep, and fire-safety.

- ❖ Work with the NCMD and other partners to promote child level learning where there is an indication for a national intervention, for example sling safety.

Child Safety this Summer

The Child Accident Prevention Trust has a [range of helpful resources](#) that highlight risks to children and how they can be reduced.

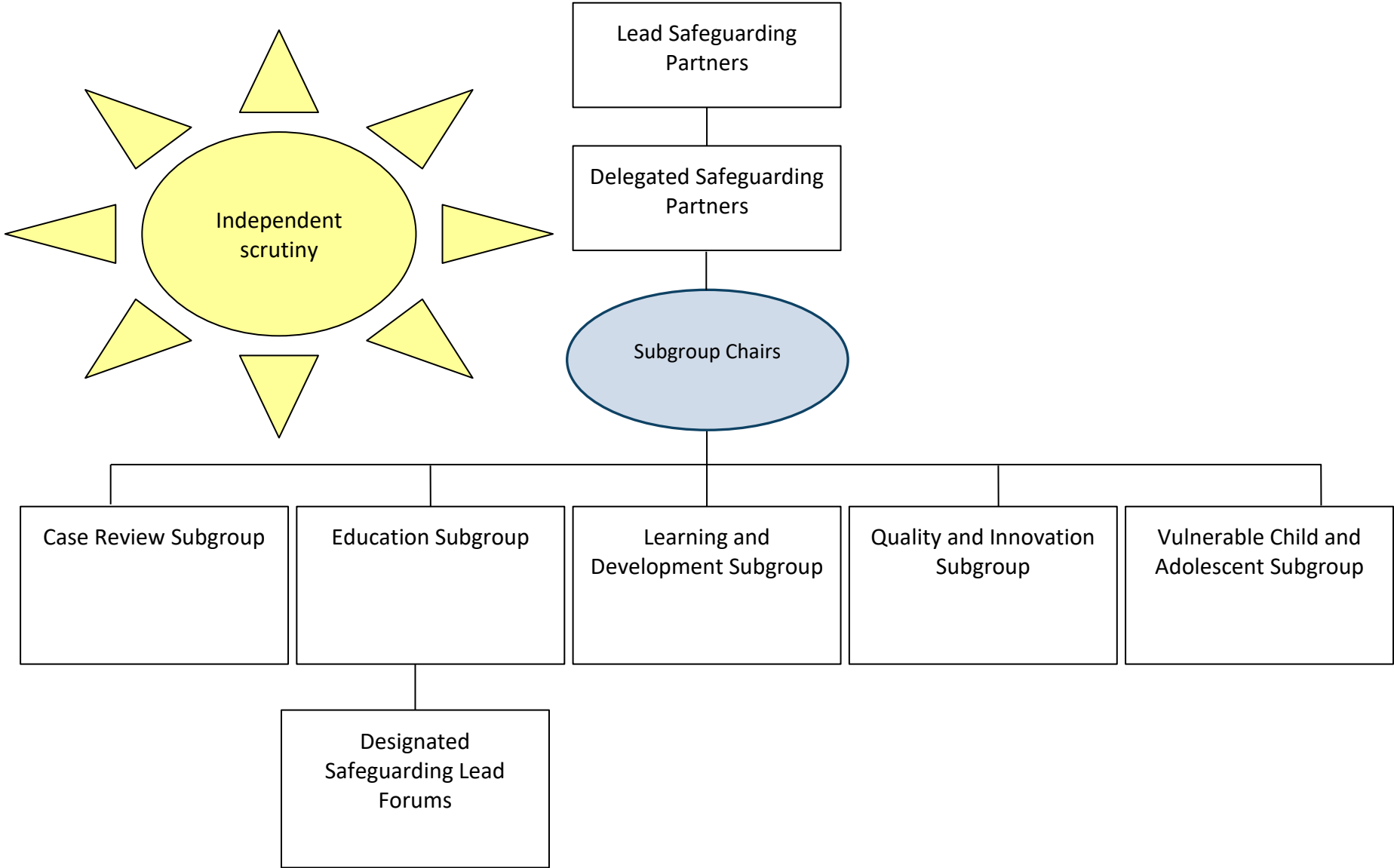
Please consider using these with families you work with to promote safety messaging this summer by sharing them on your social media, displaying them, and/or using them in direct work where concerns have been identified. Some examples of those that may be helpful concern [falls](#), [water](#), [dogs](#), and their [garden safety quiz for adults](#).

Additionally, please see this [resource from the Canal & River Trust](#) to help promote awareness of water safety with young people. You may also wish to share the attached [MPS Safer Schools Letter to parents re open water](#), with parents/carers of young people you work with (this has previously been circulated to local schools for onward sharing). Please also be aware of the [Royal Life Saving Society's water safety resources](#) and upcoming drowning prevention week running from 15-22 June.



Excerpt of awareness-raising undertaken through the [KRSCP newsletter, June 2024](#)

Appendix 1: KRSCP Structure



Appendix 2: KRSCP Finance

The expenditure for KRSCP during 2024-25 including salaries (including partnership coordinator hours allocated to child death review), the training offer, and costs of case reviews, totalled £335,750. There is an underspend of £40,680 (when taking into account the awaited contribution from the ICB) which we need to keep in reserve as our partner contributions are not linked to national public sector pay rises and increases in National Insurance contributions.

The capacity of the current business team of KRSCP to meet the demands of the partnership was discussed with LSPs during the engagement meetings with the view that an increase in funding could lead to the creation of an additional post for the team. It was however made clear by the LSPs that there is no possibility of extra funding for 2025-26 due to the current financial pressures that our statutory partners are experiencing. The KRSCP Manager will work with the DSPs and Wider Safeguarding Executive Group to prioritise workstreams for the team to ensure that the statutory functions of KRSCP are fulfilled during 2025-26.

The following table outlines KRSCP's financial position for 2024-25:

Kingston Council contribution	£140,000
Richmond Council contribution	£140,000
SWL ICB contribution for Kingston	£52,808
SWL ICB contribution for Richmond	£24,192* £12,500 (child level uplift)
Mayor's Office for Policing and Crime (MOPAC) for Kingston and Richmond contribution	£10,000
DfE grant for Implementation of Working Together 2023**	(£47,300)
Total income/budget for 2024/25	£400,582
Total expenditure for 2024/25	£335,750
Underspend (taking into account not receiving full Richmond contributions from SWL ICB)	£40,680

* SWL ICB contributions for Richmond are invoiced in two parts.
The contribution of £24,192 is still awaited.

** In January 2024, the Department for Education provided all safeguarding children partnerships with a one-off grant of £47,300 to support the implementation of Working Together 2023. The KRSCP Safeguarding Executive Group agreed to apply this against spend to recruit a fixed term one year coordinator post for the team to support the implementation process.